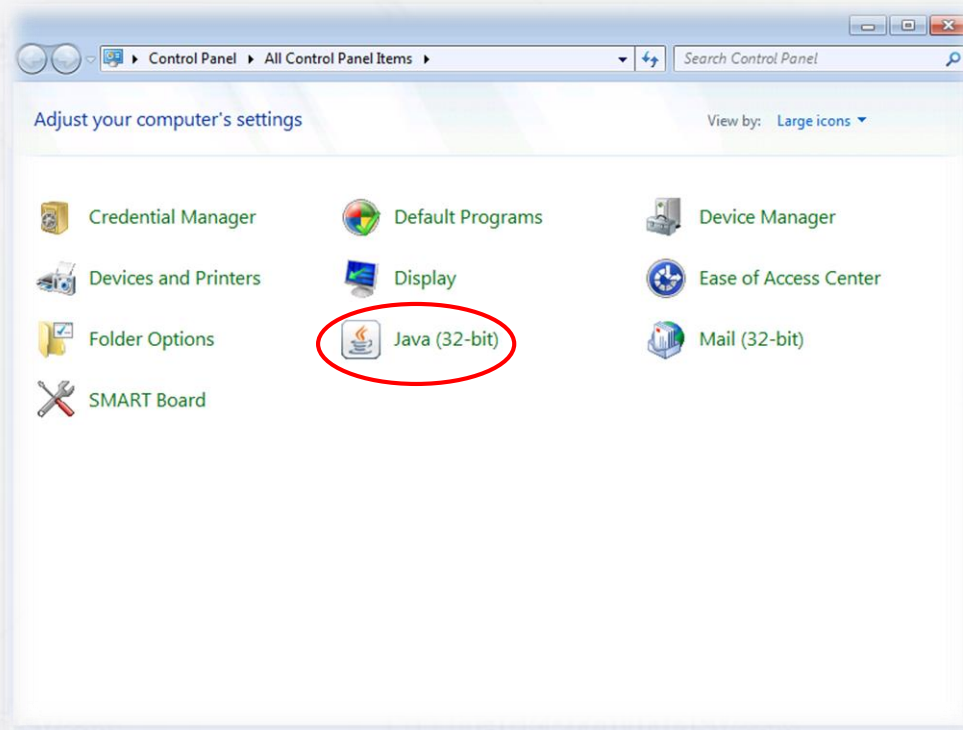
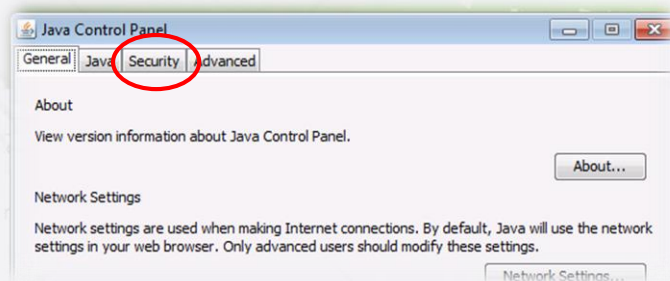


Adding an Exception to Java

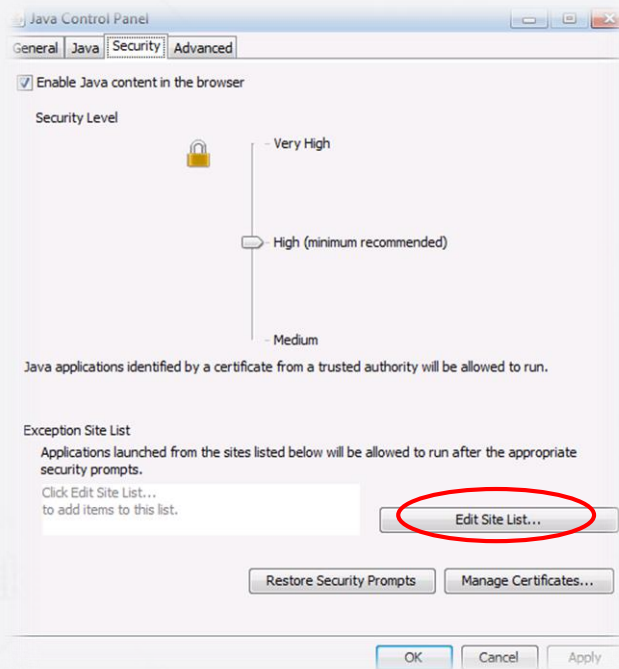
To begin, you will need the control panel, found in the start menu on the right hand side. Once in the control panel choose the 'Java (32-bit)' option.



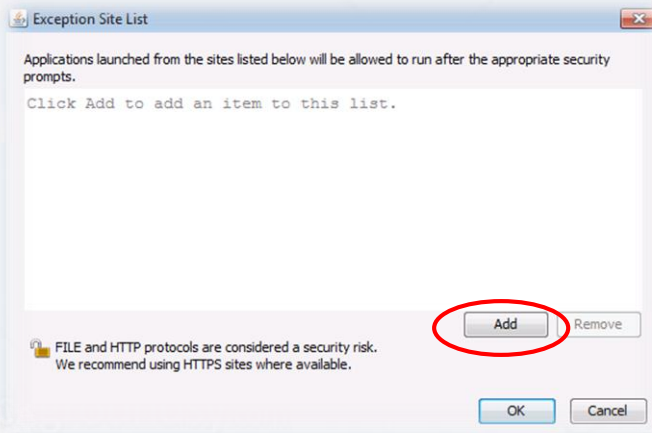
Once in the Java panel, click on the 'Security' tab at the top.



In the security tab click on 'Edit Site list...'



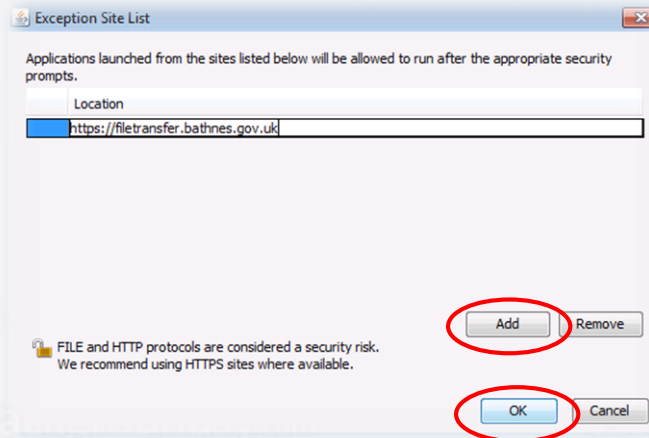
The site exception window will appear. Click on 'Add'



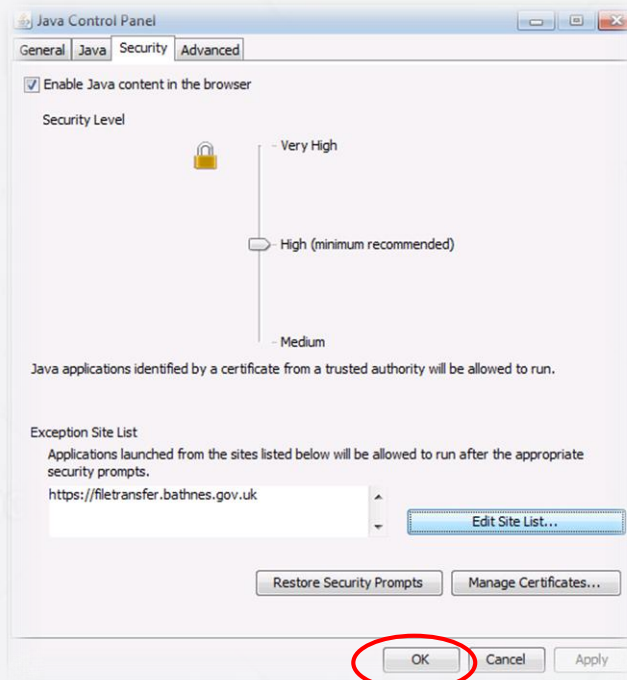
A highlighted blank box will be added to the list in the window. Click in this box and enter:

`https://filetransfer.bathnes.gov.uk` (as shown below)

Once you have entered the URL, click 'Add' and then click 'OK'



In The Java Control Panel, click 'Ok'



The exception had been added successfully