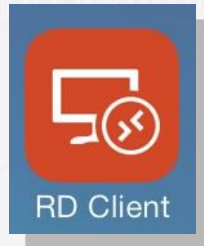


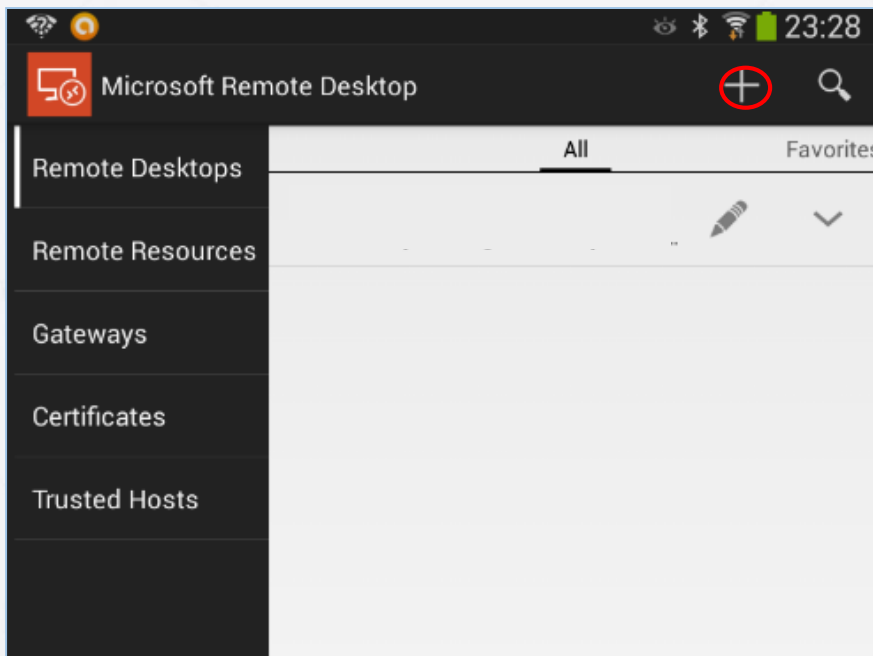
Remote access – Android

This document shows you how to connect to the remote desktop from your Android phone or tablet. For this example the user is Andy Rubin, username: arubin.

Download the **'RD Client'** App. (Microsoft Remote Desktop)



On the main page, tap '+' in the top right hand corner.



Fill in the 'Connection Name' and 'PC Name' boxes as shown below.

The screenshot shows the 'Edit Remote Desktop' interface. The 'REMOTE PC' section is active, displaying the following fields:

- Connection name: Friendly name for the remote desktop (option)
- PC name: Host name or IP address
- Gateway: No gateway configured
- CREDENTIALS: User name (Domain\user), Password

School
(Choose a name for the connection)

cvsr-vsrv-0021.chewvalleyschool.co.uk

Tap 'Gateway' and select 'Add Gateway'

The screenshot shows the 'Edit Remote Desktop' interface with the 'Gateway' dropdown menu open. The 'REMOTE PC' section is updated with:

- Connection name: Cvs
- PC name: cvsr-vsrv-0021.chewvalleyschool.co.uk

The 'Gateway' dropdown menu is expanded, showing the following options:

- No gateway configured (selected)
- Rds
- Add Gateway

Fill in the Gateway section as below, then tap 'Done' in the top right hand corner.

CVS
(Choose a name for the gateway)

rds.chewvalleyschool.co.uk

chewvalleyschoo\arubin

(Use your school account password)

On the Remote desktop page, fill out the 'credentials' section with the same information used in the previous step. Tap 'Done' on the top right hand corner.

chewvalleyschoo\arubin

(Use your school account password)

Your new connection will be shown under 'Remote Desktops'. Tap your new connection to connect.

