

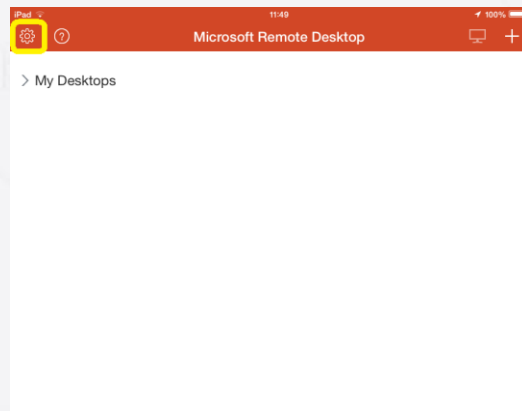
Remote access iPad

This guide allows you to access the school computers from your iPad

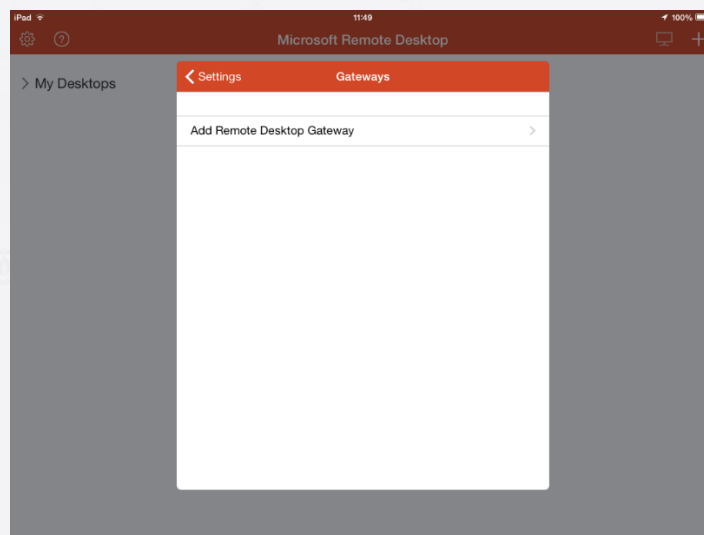
Download the RD Client from the app store



Tap on the settings icon (top left)

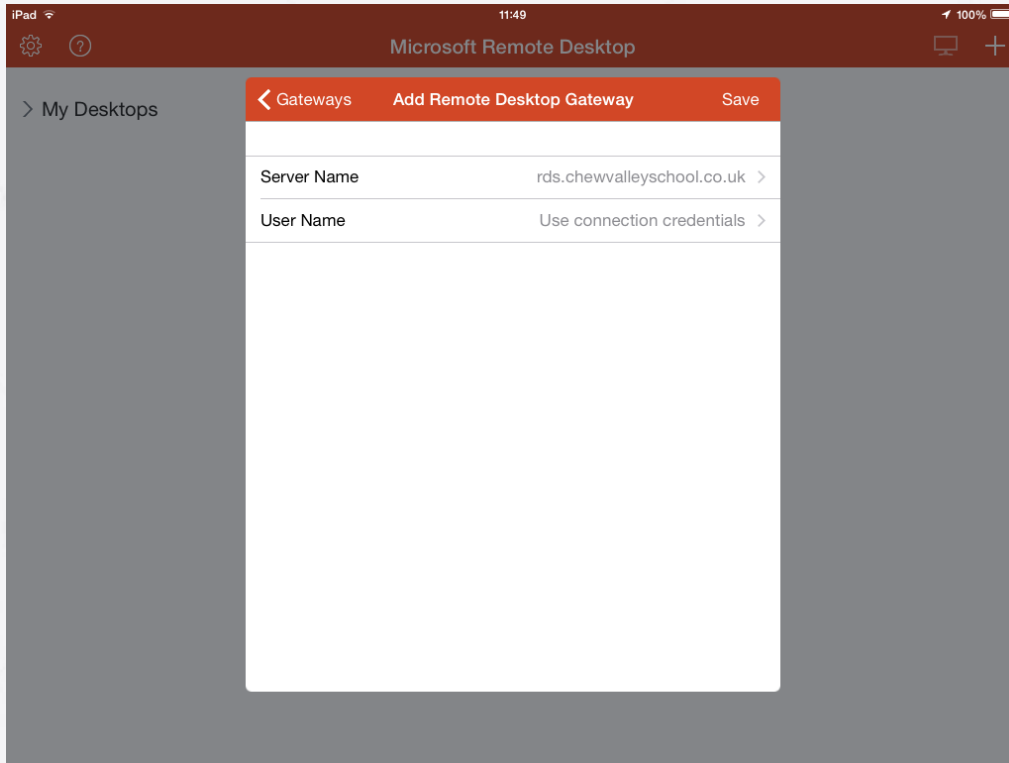


Tap on Gateways



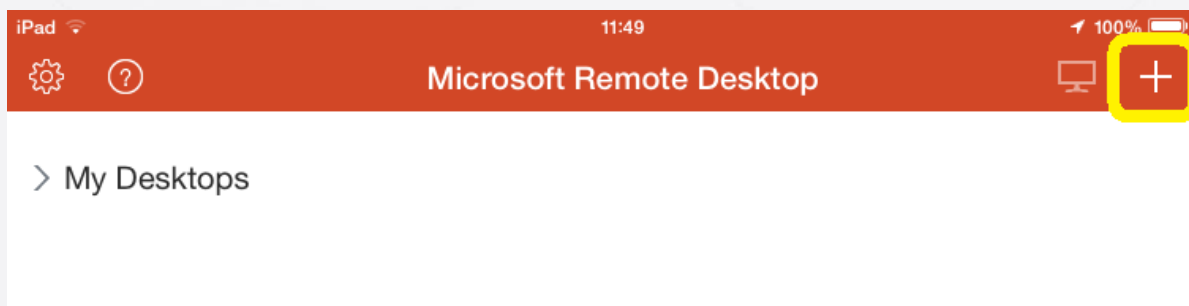
Add Remote Desktop Gateway

Use `rds.chewvalleyschool.co.uk` for Server Name and save.



Go back and tap Done.

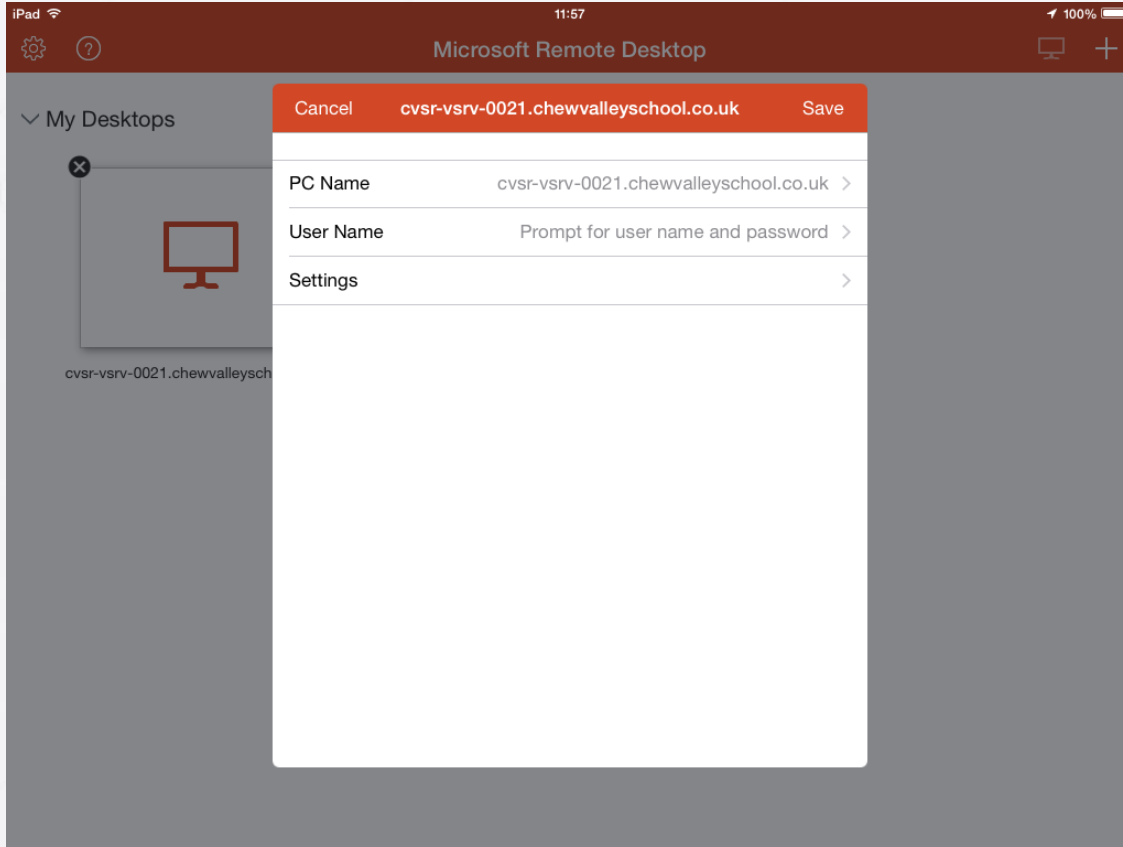
On the main screen tap the Plus icon (top right)



Select Add PC or Server.

PC Name is `cvsr-vsrv-0021.chewvalleyschool.co.uk`.

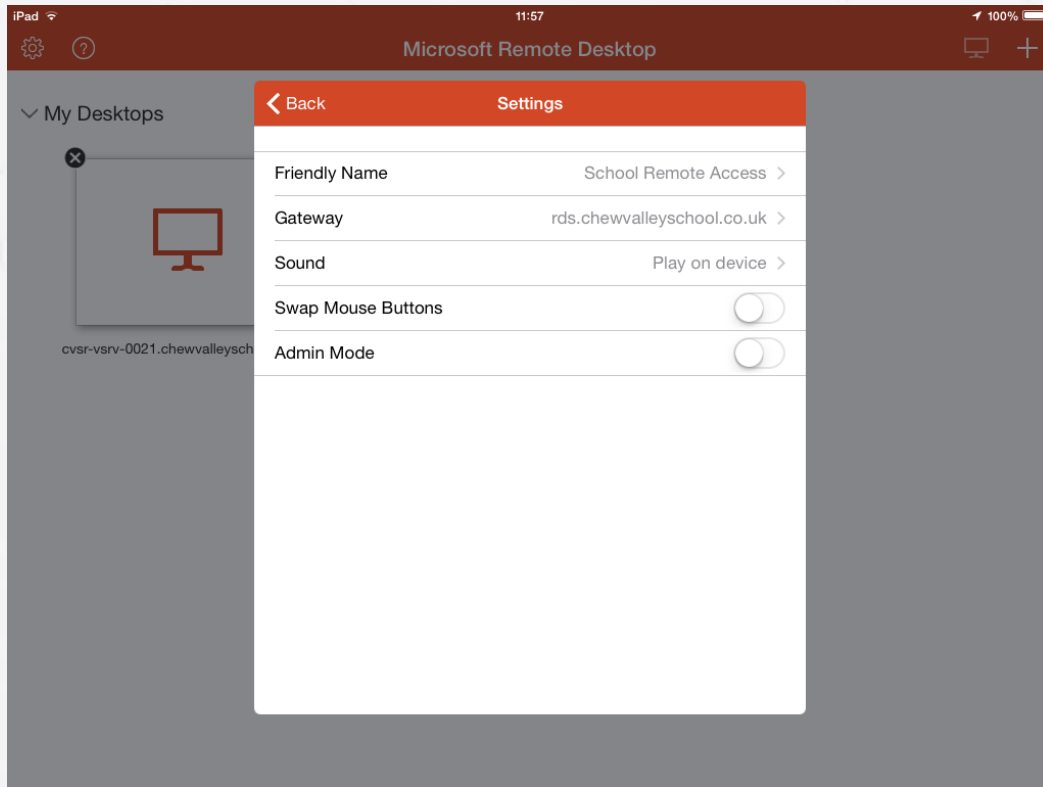
User Name should be 'Prompt for user name and password'



Tap Settings.

Set Friendly Name to **School Remote Access**.

Tap on Gateway and select rds.chewvalleyschool.co.uk.

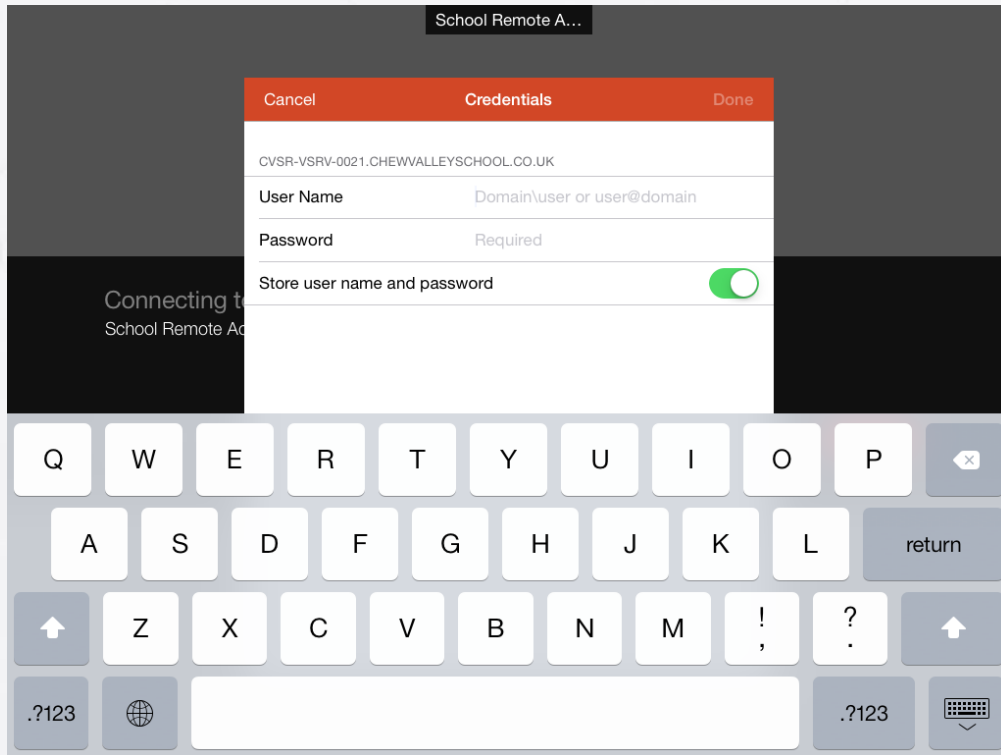


Go back and tap Save.

Tap 'School Remote Access' icon.

Type your school email and password.

Slide the 'Store user name and password' to **Enable** and tap Done.



You should be able to connect to the School's Remote Access.

Important: to end your remote session you have to Log Off. If you terminate your session by clicking the Home button you are risking of losing your files.