

Using the Philips Voice Tracer

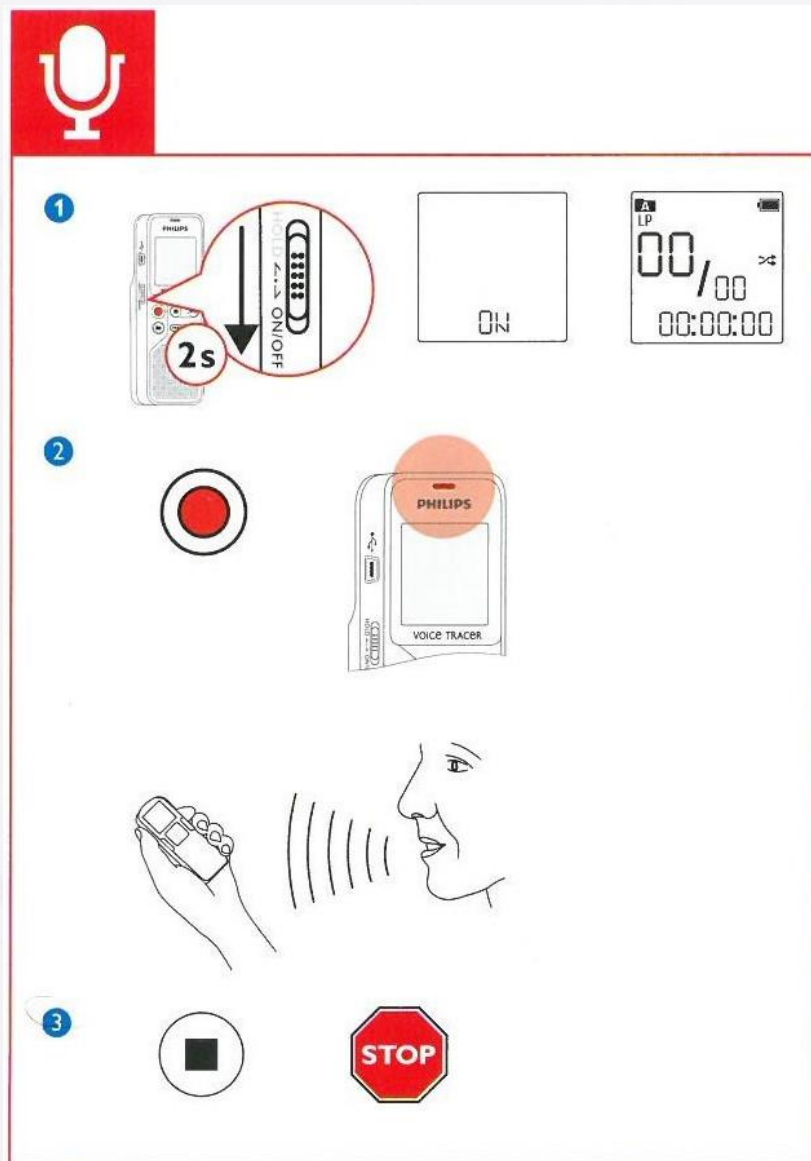
This guide will help you to use the Philips voice tracer should you encounter any problems.

Note – When you turn the Philips voice tracer on, be sure to check the battery level located on the right hand side before you start.



To turn on the device there is a switch on the left hand side.

Pull the switch down for two seconds and wait for the device to turn on.



To record press the red recording dot button on the front.

To stop recording press the silver stop square button on the front.

Volume is located on the right hand side. You can either press or hold the button for higher or lower volume.

1

2 01/05 02/05 03/05 04/05 05/05

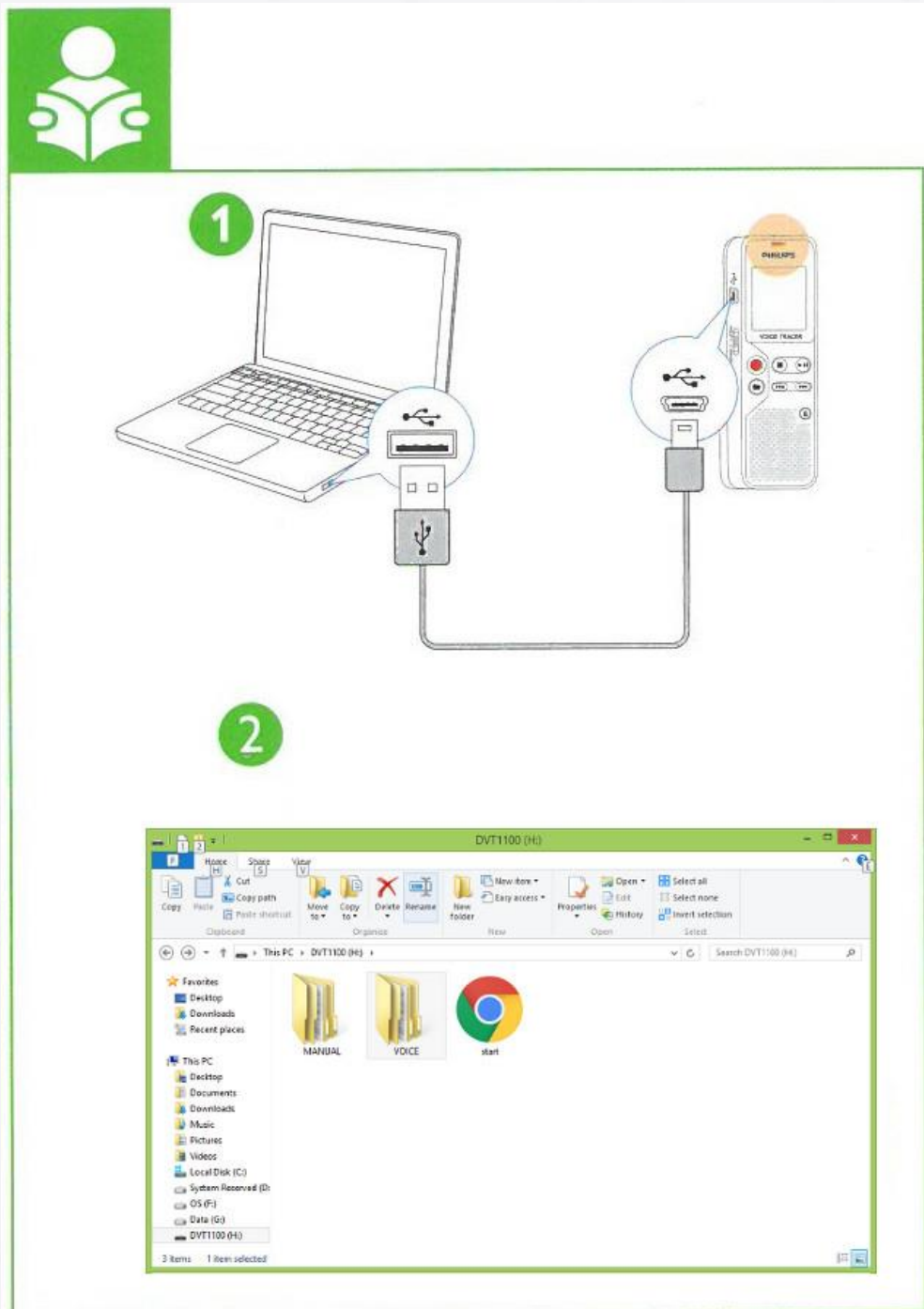
3

4

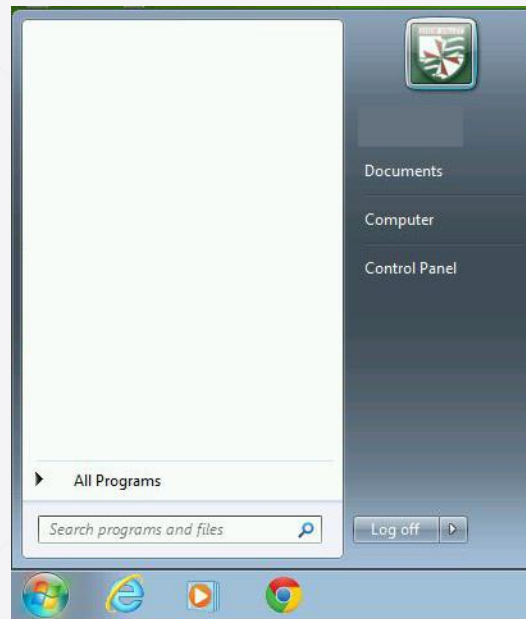
5

Connect the Phillips voice tracer to the computer using the supplied USB cable.

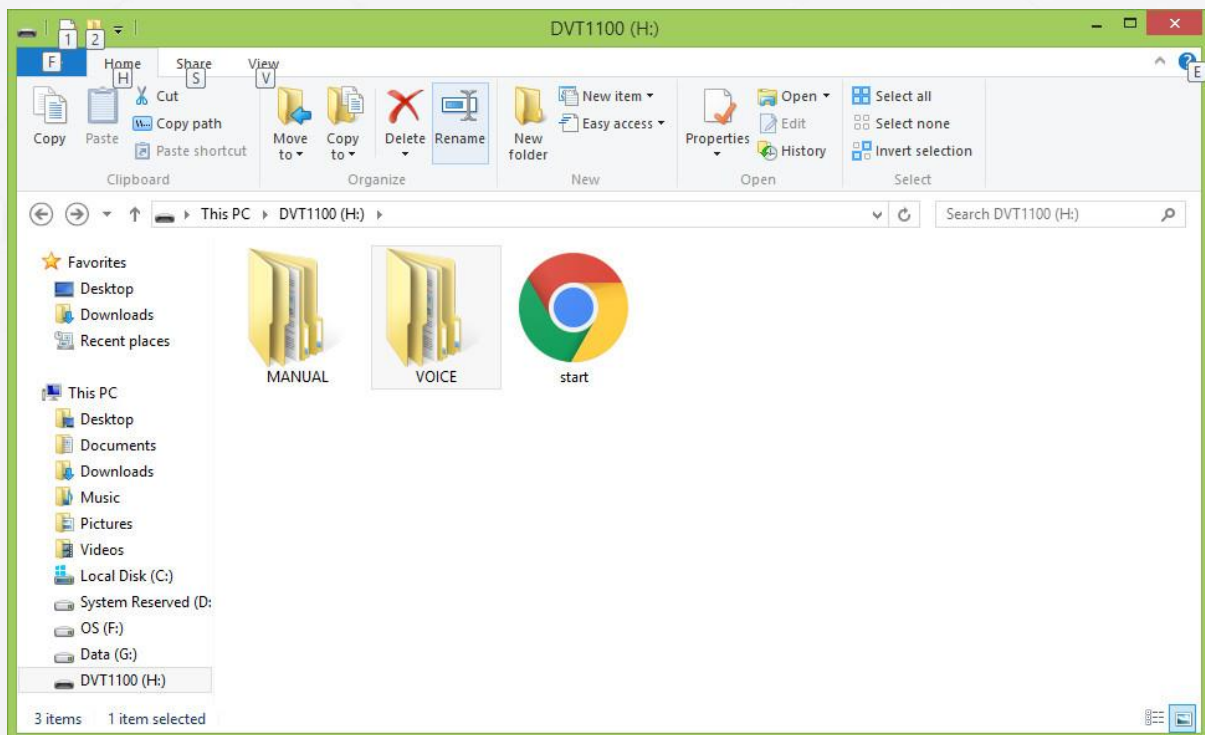
An orange light will display on the device to notify that it's connected.



Next, click start, Computer to open Windows file explorer.



The Phillips voice recorder will be displayed on the left hand side under DVT1100



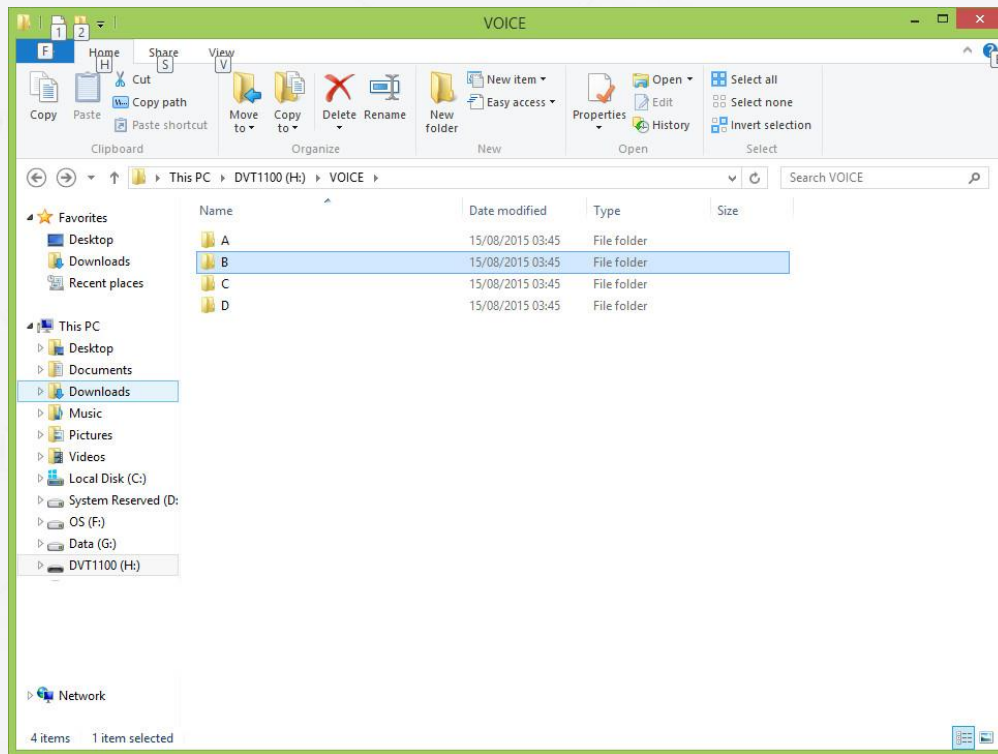
Audio files are stored within folders A, B, C or D

A – Recording

B – Listening – French

C – Listening – German

D – Listening - Spanish



You can press the folder button located under the record button to cycle through each folder on the voice recorder.

Please note that on the device they only display as A, B, C or D

Phillips voice tracer button functions

